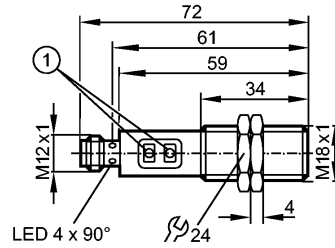


**OGH500**

OGH-FPKG/US100

Photoelectric sensors



1: Programming buttons

Made in Germany



**Product characteristics**

Diffuse reflection sensor
Threaded type
M18 x 1
Connector
Background suppression
Range 15...300mm (Range referred to white paper 200 x 200 mm, 90 % remission)
adjustable

**Electrical data**

Electrical design	DC PNP
Operating voltage [V]	10...36 DC
Current consumption [mA]	25
Type of light	Red light 624 nm
Protection class	II
Reverse polarity protection	yes

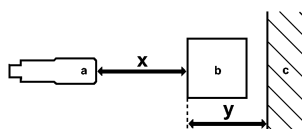
**Outputs**

Output function	light-on / dark-on programmable via pushbutton
Factory setting	light-on mode
Voltage drop [V]	< 2.5
Current rating [mA]	200 (...60 °C) / 150 (...80 °C)
Short-circuit protection	pulsed
Overload protection	yes
Switching frequency [Hz]	1000

**Range**

Range [mm]	15...300 (Range referred to white paper 200 x 200 mm, 90 % remission)
Range [mm]	15...300 (Range referred to white paper 200 x 200 mm, 90 % remission)
- Object white (90 % remission)	15...300
- Object grey (18 % remission)	15...290
- Object black (6 % remission)	15...190
Light spot diameter [mm]	25 ( at maximum range )

**Accuracy graph**



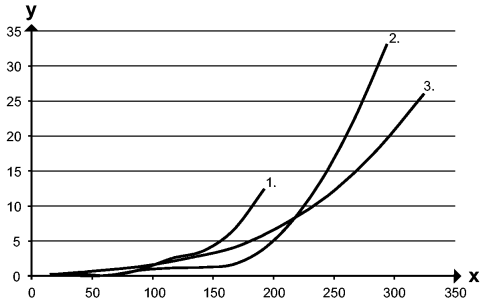
a: sensor  
b: object

**OGH500**

OGH-FPKG/US100

Photoelectric sensors

c: background  
 x: distance sensor / object  
 y: min. distance object / background



Values in [mm]

- 1 = object black (6 % remission), background white (90 % remission)
- 2 = object grey (18 % remission), background white (90 % remission)
- 3 = object white (90 % remission), background white (90 % remission)

**Environment**

Ambient temperature	[°C]	-25...80
Protection		IP 67

**Tests / approvals**

EMC		EN 60947-5-2
MTTF	[Years]	362

**Mechanical data**

Housing materials		stainless steel 316L / 1.4404; PA; LCP; EPDM; TPU
Lens material		PMMA
Weight	[kg]	0.063

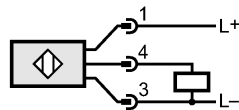
**Displays / operating elements**

Output status indication	LED	yellow
--------------------------	-----	--------

**Electrical connection**

Connection		M12 connector
------------	--	---------------

**Wiring**



**Accessories**

Accessories (included)		2 lock nuts
------------------------	--	-------------

**Remarks**

Remarks		cULus - Class 2 source required
---------	--	---------------------------------

Pack quantity	[piece]	1
---------------	---------	---